



Andy Beshear
GOVERNOR

TRANSPORTATION CABINET

200 Mero Street
Frankfort, Kentucky 40601

Jim Gray
SECRETARY

June 13, 2024

CALL NO. 202
CONTRACT ID NO. 244201
ADDENDUM # 2

Subject: BRACKEN - PENDLETON COUNTIES 121GR24T010-HSIP
Letting June 20, 2024

1. Revised Notes p. 21, 42-45, 47-49 of 107
2. Revised Material Summary p 40-41 of 107
3. Revised Proposal Bid Items p. 106, 107 of 107

Proposal revisions are available at
<http://transportation.ky.gov/Construction-Procurement/>.

If you have any questions, please contact us at 502-564-3500.

Sincerely,

A handwritten signature in black ink that reads "Rachel Mills".

Rachel Mills, P.E.
Director
Division of Construction Procurement

RM:mw
Enclosures

General Notes & Description of Work
Page 2 of 2

harmony and in a satisfactory manner, and his/her decision shall be final and binding upon the Contractor.

DESCRIPTION OF WORK

Except as specified herein, perform all work in accordance with the Department's Standard Specifications, Supplemental Specifications, applicable Special Notes and Special Provisions, and applicable Standard and Sepia Drawings, current editions. Furnish all materials, labor, equipment, and incidentals for the following work:

Pavement Resurfacing. The existing roadway is to be resurfaced from Station 1042+00 to Station 20+78. Other items that may be associated with the pavement resurfacing include: removal of existing pavement by milling and texturing, construction of edge keys, installation of rumble strips, and application of pavement markings. Refer to the rumble strip Standard Drawings for recommended placement of rumble strips.

KY 159 Widening. Work will include full depth widening the on east side of KY 159 and the radius onto KY 9. Other items associated with the work include: shoulder mill & trenching, ditching, CSB shoulder with Double Asphalt Seal Coat. Grade to drain any work on the side slopes with existing drainage.

Base Failure Repairs. An area has been identified along the route for Base Failure Repair. The repair location and dimensions listed on the plan sheets are approximate only. The Engineer will determine actual repair locations and dimensions at the time of construction. Refer to the Special Note for Base Failure Repair for more details on this item of work.

Trenching. Full depth trenching and repaving of the shoulder will replace 4 feet of the existing shoulder from Lt. Sta. 1042+80 to 1045+50, and Sta. 1046+20 to Sta. 18+84 and Rt. Sta. 1043+25 to Sta. 16+60 and as shown on the typical. Quantities are shown broken out on the Paving Areas Summary.

CSB Wedge & Chip Seal. Areas are set up to receive a CSB Wedge & Chip Seal. The proposed CSB Wedge dimensions are detailed on the Typical Sections. Refer to the Special Note for Double Asphalt Seal Coat for more information on the CSB Wedge & Chip Seal.

Erosion Control Blanket. A quantity of 227 square yards of Erosion Control Blanket has been included in the contract for potential use along areas of regraded shoulders, ditch lines, fills slopes and/or back slopes, inlets and outlets of pipes, and any other areas as directed by the Engineer. The Contractor and Engineer should work together to determine the location and best use of Erosion Control Blanket throughout this project. The Engineer will make the final determination as to the quantities and placement of Erosion Control Blanket.

Removal of Existing Signing Assemblies and Installation of Proposed Signing. A quantity of 3 each of "Remove Sign" has been included for removal of existing signs along the corridor, as identified on the Signing Plans. An estimated quantity of new signing and sign post is included on the Signing Summary. The Contractor and Engineer will work with the District Traffic Section to determine the final signing layout and sign types prior to installation of the proposed signing. Refer to the Special Note for Signing and the Special Note for Signage for more details concerning the procedures for determining and staking the final layout and installation of the signing.

Permanent 6" Striping. A quantity of Pave Striping – Thermo – 6 in has been included in the contract to restripe the entire corridor with 6" thermoplastic striping.

MATERIAL SUMMARY

CONTRACT ID: 244201

121GR24T010-HSIP

0601200092401

AA HIGHWAY (KY 9) FROM MP 19.73 TO THE COUNTY LINE, OVERLAY KY 9 AND RESTRIPE THE ROADWAY CONFIGURATION TO ADD A TURN LANE AT ILER ROAD ASPHALT PAVEMENT & ROADWAY REHAB, A DISTANCE OF .13 MILES.

Project Line No	Bid Code	DESCRIPTION	Quantity	Unit
0005	00194	LEVELING & WEDGING PG76-22	20.00	TON
0020	00356	ASPHALT MATERIAL FOR TACK	1.70	TON
0025	02677	ASPHALT PAVE MILLING & TEXTURING	232.00	TON
0030	00003	CRUSHED STONE BASE	38.00	TON
0035	00100	ASPHALT SEAL AGGREGATE	.56	TON
0040	00103	ASPHALT SEAL COAT	.07	TON
0045	02562	TEMPORARY SIGNS	125.00	SQFT
0050	02650	MAINTAIN & CONTROL TRAFFIC - (BRACKEN KY 9 HSIP)	1.00	LS
0055	02671	PORTABLE CHANGEABLE MESSAGE SIGN	1.00	EACH
0060	02696	SHOULDER RUMBLE STRIPS	1,200.00	LF
0065	02726	STAKING - (BRACKEN KY 9 HSIP)	1.00	LS
0070	02775	ARROW PANEL	1.00	EACH
0075	06542	PAVE STRIPING-THERMO-6 IN W	1,586.00	LF
0080	06543	PAVE STRIPING-THERMO-6 IN Y	2,002.00	LF
0085	06547	PAVE STRIPING-THERMO-12 IN Y	18.00	LF
0090	06568	PAVE MARKING-THERMO STOP BAR-24IN	25.00	LF
0095	06569	PAVE MARKING-THERMO CROSS-HATCH	251.00	SQFT
0100	06574	PAVE MARKING-THERMO CURV ARROW	3.00	EACH
0105	06610	INLAID PAVEMENT MARKER-MW	14.00	EACH
0110	06612	INLAID PAVEMENT MARKER-BY	20.00	EACH
0115	20458ES403	CENTERLINE RUMBLE STRIPS	901.00	LF
0120	02569	DEMOBILIZATION	1.00	LS
0125	21289ED	LONGITUDINAL EDGE KEY - (ADDED 6-13-24)	1,020.00	LF
0130	06427	TRENCHING - (ADDED 6-13-24)	1,020.00	LF
0135	00214	CL3 ASPH BASE 1.00D PG64-22 - (ADDED 6-13-24)	245.00	TON
0140	00388	CL3 ASPH SURF 0.38B PG64-22 - (ADDED 6-13-24)	275.00	TON

MATERIAL SUMMARY



CONTRACT ID: 244201

121GR24T010-HSIP



0609600092401

AA HIGHWAY (KY 9) FROM THE COUNTY LINE TO MP 0.39, OVERLAY KY 9 AND RESTRIPE THE ROADWAY CONFIGURATION TO ADD A TURN LANE AT KY 159 ASPHALT PAVEMENT & ROADWAY REHAB, A DISTANCE OF .13 MILES.

Project Line No	Bid Code	DESCRIPTION	Quantity	Unit
0140	00356	ASPHALT MATERIAL FOR TACK	6.00	TON
0145	02677	ASPHALT PAVE MILLING & TEXTURING	753.00	TON
0150	00003	CRUSHED STONE BASE	354.00	TON
0155	00100	ASPHALT SEAL AGGREGATE	3.40	TON
0160	00103	ASPHALT SEAL COAT	.40	TON
0165	02237	DITCHING	200.00	LF
0170	02562	TEMPORARY SIGNS	125.00	SQFT
0175	02650	MAINTAIN & CONTROL TRAFFIC - (PENDLETON KY 9 HSIP)	1.00	LS
0180	02671	PORTABLE CHANGEABLE MESSAGE SIGN	1.00	EACH
0185	02696	SHOULDER RUMBLE STRIPS	4,076.00	LF
0190	02704	SILT TRAP TYPE B	1.00	EACH
0195	02726	STAKING - (PENDLETON KY 9 HSIP)	1.00	LS
0200	05950	EROSION CONTROL BLANKET	227.00	SQYD
0205	05952	TEMP MULCH	387.00	SQYD
0210	05963	INITIAL FERTILIZER	.10	TON
0215	05964	MAINTENANCE FERTILIZER	.10	TON
0220	05985	SEEDING AND PROTECTION	160.00	SQYD
0225	05992	AGRICULTURAL LIMESTONE	.10	TON
0230	06542	PAVE STRIPING-THERMO-6 IN W	5,223.00	LF
0235	06543	PAVE STRIPING-THERMO-6 IN Y	7,062.00	LF
0240	06547	PAVE STRIPING-THERMO-12 IN Y	25.00	LF
0245	06568	PAVE MARKING-THERMO STOP BAR-24IN	27.00	LF
0250	06569	PAVE MARKING-THERMO CROSS-HATCH	987.00	SQFT
0255	06574	PAVE MARKING-THERMO CURV ARROW	9.00	EACH
0260	06610	INLAID PAVEMENT MARKER-MW	38.00	EACH
0265	06612	INLAID PAVEMENT MARKER-BY	49.00	EACH
0270	20458ES403	CENTERLINE RUMBLE STRIPS	3,030.00	LF
0275	20748ED	SHOULDER MILLING/TRENCHING	252.00	SQYD
0280	23607EC	PAVE MARK THERMO-LANE REDUCTION ARROW	3.00	EACH
0285	06407	SBM ALUM SHEET SIGNS .125 IN	64.00	SQFT
0290	06410	STEEL POST TYPE 1	96.00	LF
0295	21373ND	REMOVE SIGN	3.00	EACH
0300	24631EC	BARCODE SIGN INVENTORY	4.00	EACH
0305	02569	DEMOBILIZATION	1.00	LS
0310	21289ED	LONGITUDINAL EDGE KEY - (ADDED 6-13-24)	4,046.00	LF
0315	06427	TRENCHING - (ADDED 6-13-24)	3,540.00	LF
0320	00388	CL3 ASPH SURF 0.38B PG64-22 - (ADDED 6-13-24)	943.00	TON
0325	00214	CL3 ASPH BASE 1.00D PG64-22 - (ADDED 6-13-24)	958.00	TON



<div style="display: flex; justify-content: space-between; align-items: center;">  <div style="text-align: center;"> <p>Highway Safety Improvement Program</p> <p>Item No: 6-948.00</p> <p>County: Bracken</p> <p>Route: KY 9</p> </div>  </div>			
GENERAL SUMMARY			
ITEM NO	ITEM	UNIT	QTY
00388	CL3 ASPH SURF 0.38B PG64-22	TON	275
00214	CL3 ASPH BASE 1.00D PG64-22	TON	245
00003	CSB	TON	247
00190	LEVELING & WEDGING PG64-22	TON	20
00100	ASPHALT SEAL AGGREGATE	TON	0.56
00103	ASPHALT SEAL COAT	TON	0.07
00356	ASPHALT MATERIAL FOR TACK	TON	2.1
02696	SHOULDER RUMBLE STRIPS	LF	1200
02677	ASPH PAVE MILL & TEXTURING	TON	232
20748ED	SHOULDER MILLING/TRENCHING	SQYD	0
20458ES403	CENTERLINE RUMBLE STRIPS	LF	901
21289ED	LONGITUDINAL EDGE KEY	LF	1020
06427	TRENCHING	LF	1020
06542	PAVE STRIPING - THERMO - 6 IN W	LF	1586
06543	PAVE STRIPING - THERMO - 6 IN Y	LF	2002
06547	PAVE STRIPING - THERMO - 12 IN Y	LF	18
06568	PAVE MARKING-THERMO STOP BAR-24IN	LF	25
06569	PAVE MARKING-THERMO CROSS-HATCH	SQFT	251
06574	PAVE MARKING-THERMO CURV ARROW	EACH	3
23607EC	PAVE MARK THERMO-LANE REDUCTION ARROW	EACH	0
6610	INLAID PAVEMENT MARKERS - MW	EA	14
6612	INLAID PAVEMENT MARKERS - BY	EA	20
2237	DITCHING	LF	0
2562	TEMPORARY SIGNS	SF	125
2650	MAINTAIN & CONTROL TRAFFIC	LS	1
2671	PORTABLE CHANGEABLE MESSAGE SIGN	EACH	1
2726	STAKING	LS	1
2775	ARROW PANEL	EA	1
6407	SBM ALUM SHEET SIGNS 0.125 INCH	SF	0
6410	STEEL POST - TYPE 1	LF	0
24631EC	BARCODE SIGN INVENTORY	EA	0
21373ND	REMOVE SIGN	EA	0
2704	SILT TRAP TYPE B	EA	0
5985	SEEDING AND PROTECTION	SY	0
5952	TEMP MULCH	SY	0
5963	INITIAL FERTILIZER	TON	0
5964	MAINTENANCE FERTILIZER	TON	0
5992	AGRICULTURAL LIMESTONE	TON	0
5950	EROSION CONTROL BLANKET	SY	0
2569	DEMOBILIZATION	LS	1

<div style="display: flex; justify-content: space-between; align-items: center;">  <div style="text-align: center;"> <p>Highway Safety Improvement Program</p> <p>Item No: 6-948.00</p> <p>County: Pendleton</p> <p>Route: KY 9</p> </div>  </div>			
GENERAL SUMMARY			
ITEM NO	ITEM	UNIT	QTY
00388	CL3 ASPH SURF 0.38B PG64-22	TON	943
00214	CL3 ASPH BASE 1.00D PG64-22	TON	958
00003	CSB	TON	1091
00190	LEVELING & WEDGING PG64-22	TON	0
00100	ASPHALT SEAL AGGREGATE	TON	3.34
00103	ASPHALT SEAL COAT	TON	0.4
00356	ASPHALT MATERIAL FOR TACK	TON	7.3
02696	SHOULDER RUMBLE STRIPS	LF	4076
02677	ASPH PAVE MILL & TEXTURING	TON	753
20748ED	SHOULDER MILLING/TRENCHING	SQYD	252
20458ES403	CENTERLINE RUMBLE STRIPS	LF	3030
21289ED	LONGITUDINAL EDGE KEY	LF	4046
06427	TRENCHING	LF	3540
06542	PAVE STRIPING - THERMO - 6 IN W	LF	5223
06543	PAVE STRIPING - THERMO - 6 IN Y	LF	7062
06547	PAVE STRIPING - THERMO - 12 IN Y	LF	25
06568	PAVE MARKING-THERMO STOP BAR-24IN	LF	27
06569	PAVE MARKING-THERMO CROSS-HATCH	SQFT	987
06574	PAVE MARKING-THERMO CURV ARROW	EACH	9
23607EC	PAVE MARK THERMO-LANE REDUCTION ARROW	EACH	3
6610	INLAID PAVEMENT MARKERS - MW	EA	38
6612	INLAID PAVEMENT MARKERS - BY	EA	49
2237	DITCHING	LF	200
2562	TEMPORARY SIGNS	SF	125
2650	MAINTAIN & CONTROL TRAFFIC	LS	1
2671	PORTABLE CHANGEABLE MESSAGE SIGN	EACH	1
2726	STAKING	LS	1
2775	ARROW PANEL	EA	0
6407	SBM ALUM SHEET SIGNS 0.125 INCH	SF	64
6410	STEEL POST - TYPE 1	LF	96
24631EC	BARCODE SIGN INVENTORY	EA	4
21373ND	REMOVE SIGN	EA	3
2704	SILT TRAP TYPE B	EA	1
5985	SEEDING AND PROTECTION	SY	160
5952	TEMP MULCH	SY	387
5963	INITIAL FERTILIZER	TON	0.1
5964	MAINTENANCE FERTILIZER	TON	0.1
5992	AGRICULTURAL LIMESTONE	TON	0.1
5950	EROSION CONTROL BLANKET	SY	227
2569	DEMOBILIZATION	LS	1

 <div style="text-align: center;"> Highway Safety Improvement Program Item No: 6-948.00 County: Bracken Route: KY 9 </div> 			
PAVING AREAS			
ITEM NO	ITEM	UNIT	QUANTITY
00388	CL3 ASPH SURF 0.38B PG 64-22 (1.25 INCH)	SY	3990
00214	CL3 ASPH BASE 1.0D PG 64-22 (TOP LIFT) (3.00 INCH)	SY	3991
00214	CL3 ASPH BASE 1.0D PG 64-22 (MIDDLE LIFT) (3.00 INCH)	SY	0
00214	CL3 ASPH BASE 1.0D PG 64-22 (BOTTOM LIFT) (3.25 INCH)	SY	0
00003	CSB (8 INCH) ²	SY	0
00100	ASPHALT SEAL AGGREGATE ¹	SY	22
00103	ASPHALT SEAL COAT ¹	SY	22
00356	ASPHALT MATERIAL FOR TACK	SY	4977
00190	LEVELING & WEDGING PG64-22 ³	SY	78
02677	ASPH PAVE MILL & TEXTURING (1.25 INCH)	SY	3458
QUANTITIES FOR TRENCHING AND FULL DEPTH PAVEMENT ⁴			
ITEM NO	ITEM	UNIT	QUANTITY
00214	CL3 ASPH BASE 1.0D PG 64-22 (TOP LIFT) (3.00 INCH)	SY	454
00214	CL3 ASPH BASE 1.0D PG 64-22 (MIDDLE LIFT) (3.00 INCH)	SY	454
00214	CL3 ASPH BASE 1.0D PG 64-22 (BOTTOM LIFT) (3.25 INCH)	SY	454
00003	CSB (8 INCH)	SY	454
21289ED	LONGITUDINAL EDGE KEY	LF	1020
06427	TRENCHING	LF	1020
QUANTITIES FOR TRENCHING AND FULL DEPTH PAVEMENT ⁵			
ITEM NO	ITEM	UNIT	QUANTITY
20748ED	SHOULDER MILLING/TRENCHING	SQYD	0
21289ED	LONGITUDINAL EDGE KEY	LF	0

Notes:

1. See Special Note for Double Asphalt Seal Coat for rates of application.
2. Additional quantity (tons) included in general summary for CSB wedge for daylighted shoulders.
3. Additional quantity (tons) included in general summary. Leveling is to be used as directed by the engineer.
4. The use of these additional quantities are for the trenching and full depth shoulder pavement along KY 9.
5. The use of these additional quantities are for the trenching and full depth shoulder pavement along KY 159.

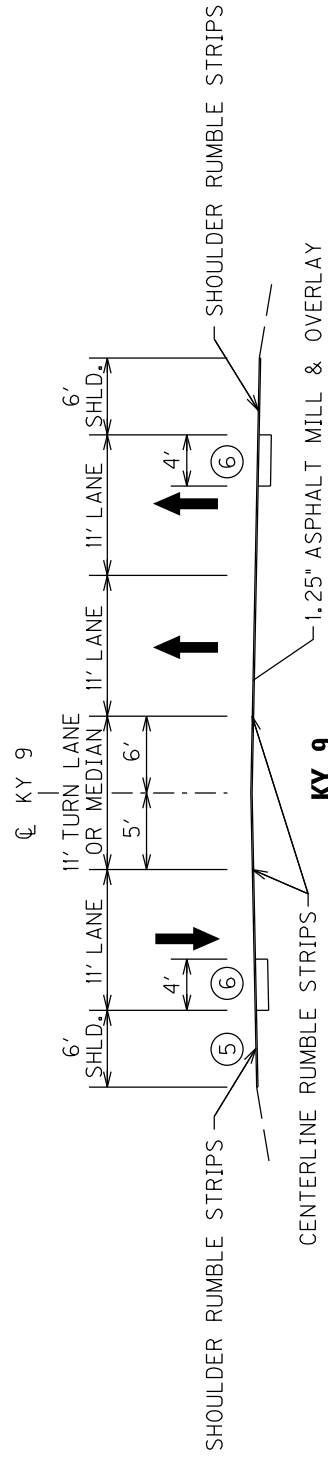
 <div style="text-align: center;"> Highway Safety Improvement Program Item No: 6-948.00 County: Pendleton Route: KY 9 </div> 			
PAVING AREAS			
ITEM NO	ITEM	UNIT	QUANTITY
00388	CL3 ASPH SURF 0.38B PG 64-22 (1.25 INCH)	SY	13712
00214	CL3 ASPH BASE 1.0D PG 64-22 (TOP LIFT) (3.00 INCH)	SY	13750
00214	CL3 ASPH BASE 1.0D PG 64-22 (MIDDLE LIFT) (3.00 INCH)	SY	13762
00214	CL3 ASPH BASE 1.0D PG 64-22 (BOTTOM LIFT) (3.25 INCH)	SY	13782
00003	CSB (8 INCH) ²	SY	13802
00100	ASPHALT SEAL AGGREGATE ¹	SY	1200
00103	ASPHALT SEAL COAT ¹	SY	1200
00356	ASPHALT MATERIAL FOR TACK	SY	17489
00190	LEVELING & WEDGING PG64-22	SY	0
02677	ASPH PAVE MILL & TEXTURING (1.25 INCH)	SY	11858
QUANTITIES FOR TRENCHING AND FULL DEPTH PAVEMENT ³			
ITEM NO	ITEM	UNIT	QUANTITY
00214	CL3 ASPH BASE 1.0D PG 64-22 (TOP LIFT) (3.00 INCH)	SY	1573
00214	CL3 ASPH BASE 1.0D PG 64-22 (MIDDLE LIFT) (3.00 INCH)	SY	1573
00214	CL3 ASPH BASE 1.0D PG 64-22 (BOTTOM LIFT) (3.25 INCH)	SY	1573
00003	CSB (8 INCH)	SY	1573
21289ED	LONGITUDINAL EDGE KEY	LF	3540
06427	TRENCHING	LF	3540
QUANTITIES FOR TRENCHING AND FULL DEPTH PAVEMENT ⁴			
ITEM NO	ITEM	UNIT	QUANTITY
20748ED	SHOULDER MILLING/TRENCHING	SQYD	252
21289ED	LONGITUDINAL EDGE KEY	LF	506

Notes:

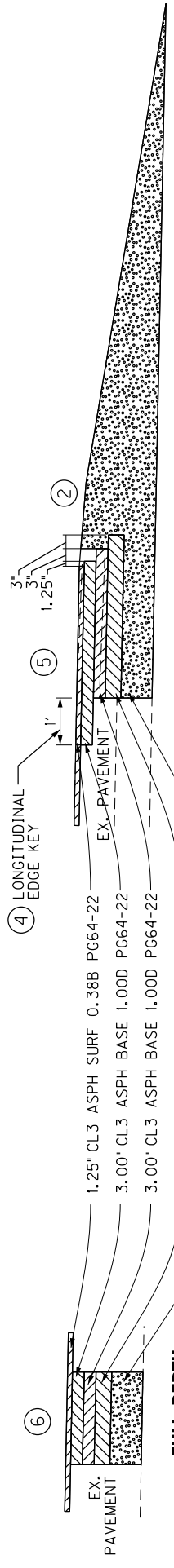
1. See Special Note for Double Asphalt Seal Coat for rates of application.
2. Additional quantity (tons) included in general summary for CSB wedge for daylighted shoulders.
3. The use of these additional quantities are for the trenching and full depth shoulder pavement along KY 9.
4. The use of these additional quantities are for the trenching and full depth shoulder pavement along KY 159.

COUNTY OF	ITEM NO.	SHEET NO.
BRACKEN PENDLETON	6-948.00	---

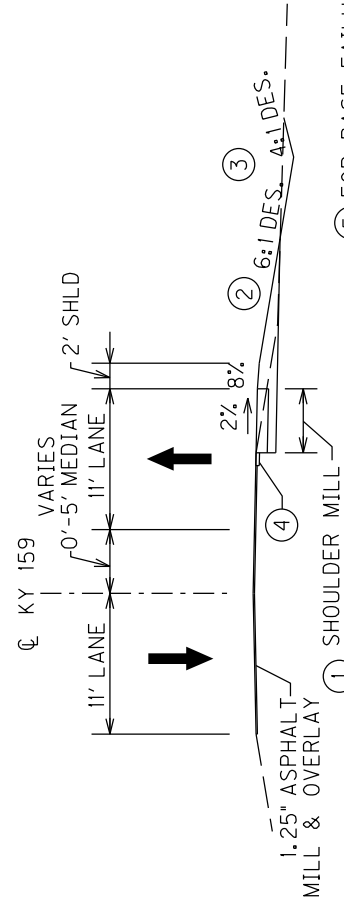
TYPICAL SECTION



KY 9
STA. 1042+00 TO STA. 20+78



FULL DEPTH PAVEMENT DESIGN



FULL DEPTH SHOULDER TRENCHING PAVEMENT DESIGN

KY 159
STA. 50+00 TO STA. 52+52.8

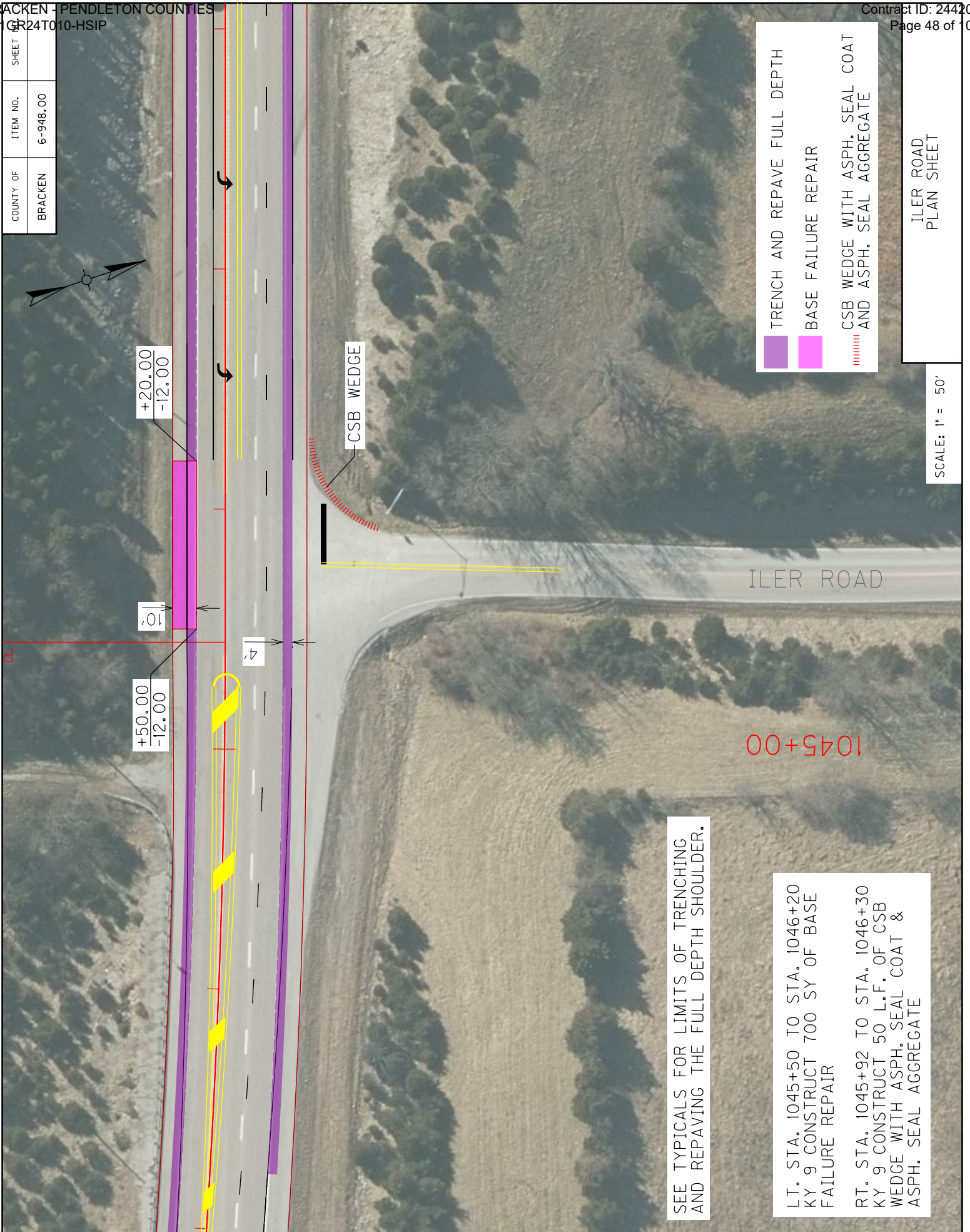
- SEE KY 159 PLAN SHEET FOR FURTHER DETAILS ON PAVEMENT WIDENING AND SHOULDER MILL & TRENCHING WIDTHS. REMOVE A MIN. OF 1' OF EXIST. PAVEMENT EDGE WITH TRENCHING.
- ASPHALT SEAL REQUIRED FROM EDGE OF PAVED SHOULDER TO A POINT 2 FEET DOWN THE DITCH OR FILL SLOPE.
- REGRADE EXISTING DITCH PAST THE CSB SHOULDER USING BID ITEM DITCHING (LF). GRADE DITCH TO DRAIN.
- LONGITUDINAL EDGE KEY TO BE USED WHERE FULL DEPTH IS ADJACENT TO OVERLAY AND SHALL BE PAID BY LF.

- FOR BASE FAILURE REPAIR LOCATION, USE 1.25" CL3 ASPH. SURF. 0.388 PG64-22, 3.00" CL3 ASPH. BASE 1,000 PG64-22 AND LEVEL & WEDGE. SEE SPECIAL NOTE FOR BASE FAILURE REPAIR.
- FULL DEPTH TRENCHING AND REPAVING OF THE SHOULDER ARE AT THE FOLLOWING LOCATIONS:
RT. STA. 1043+25 TO STA. 16+60,
LT. STA. 1042+80 TO STA. 1045+50, AND
LT. STA. 1046+20 TO STA. 18+84

TYPICAL SECTIONS

SCALE: N/A

COUNTY OF	ITEM NO.	SHEET
BRACKEN	6-948.00	



- TRENCH AND REPAVE FULL DEPTH
- BASE FAILURE REPAIR
- CSB WEDGE WITH ASPH. SEAL COAT AND ASPH. SEAL AGGREGATE

ILER ROAD
PLAN SHEET

SCALE: 1" = 50'

SEE TYPICALS FOR LIMITS OF TRENCHING AND REPAVING THE FULL DEPTH SHOULDER.

LT. STA. 1045+50 TO STA. 1046+20
KY 9 CONSTRUCT 700 SY OF BASE FAILURE REPAIR

RT. STA. 1045+92 TO STA. 1046+30
KY 9 CONSTRUCT 50 L.F. OF CSB WEDGE WITH ASPH. SEAL COAT & ASPH. SEAL AGGREGATE

COUNTY OF	ITEM NO.	SHEET
PENDLETON	6-948.00	

LT. STA. 15+11 KY 9 TO STA. 52+53
 KY 159 SHOULDER MILL & TRENCH
 252 SY AND CONSTRUCT 252 SY OF
 FULL DEPTH PAVEMENT

LT. STA. 15+11 KY 9 TO STA. 51+76
 KY 159 CONSTRUCT 200 LF. OF
 DITCHING AND GRADE EXIST. DITCH
 TO DRAIN W/227 SY. OF ECB

RT STA. 14+30 TO STA. 16+00 KY 9
 CONSTRUCT 169 L.F. OF CSB WEDGE
 WITH ASPH. SEAL COAT & ASPH.
 SEAL AGGREGATE

- TRENCH AND REPAVE FULL DEPTH
- SHOULDER MILL & TRENCH
- CSB WEDGE WITH ASPH. SEAL COAT AND ASPH. SEAL AGGREGATE

SEE TYPICALS FOR LIMITS OF TRENCHING AND REPAVING THE FULL DEPTH SHOULDER.

15+00

52+00

51+00

50+00

59.71

+52.80
-11.00

+94.52
-17.32

+97.52
-92.26

+39.75
-23.16

+10.77
-22.00

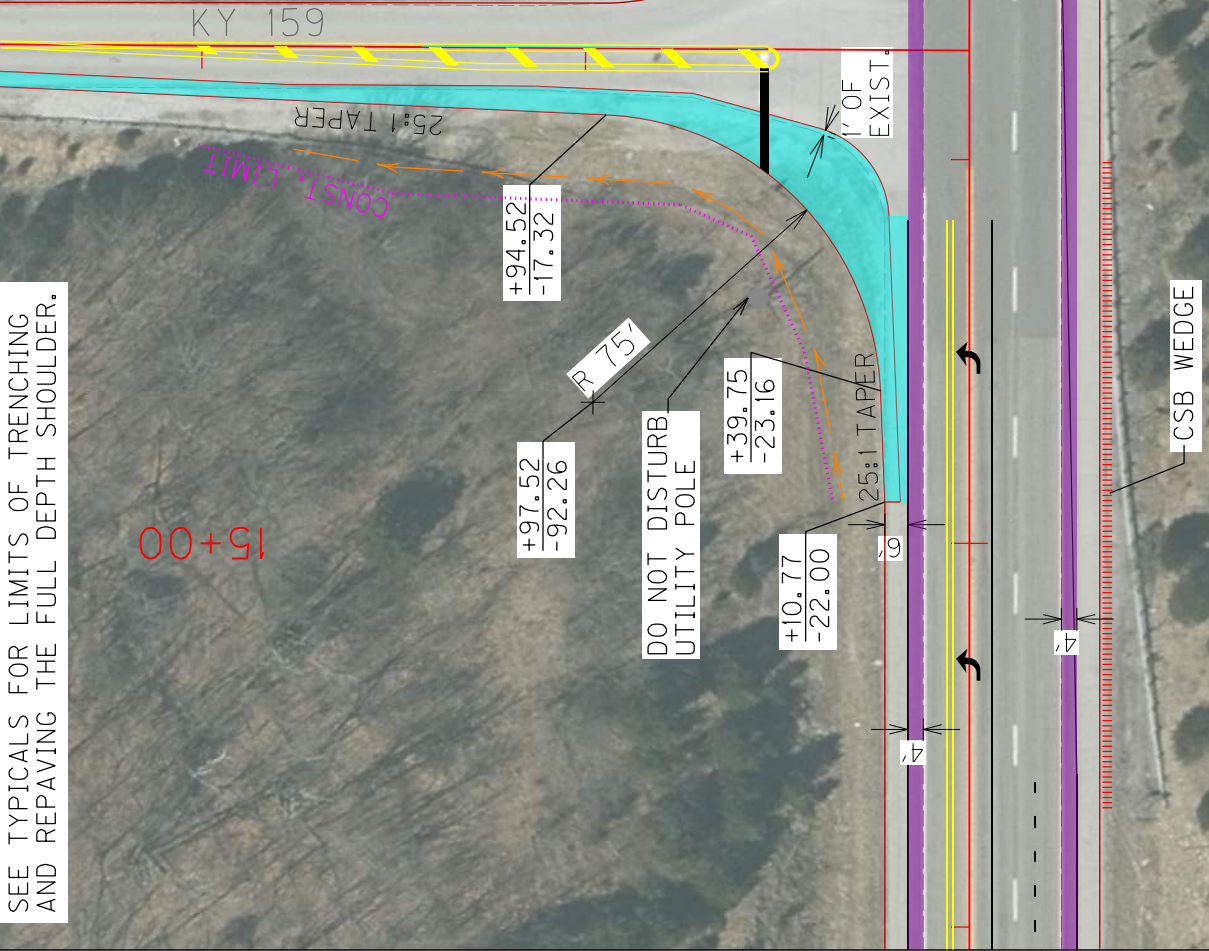
4'

R 75'

60'

4'

CONST. LIMIT



KY 159
 PLAN SHEET
 STA. 50+00 TO STA. 52+53

SCALE: 1" = 50'

PROPOSAL BID ITEMS

244201

Page 1 of 2

Report Date 6/13/24

Section: 0001 - PAVING

LINE	BID CODE	ALT	DESCRIPTION	QUANTITY	UNIT	UNIT PRIC	FP	AMOUNT
0010	00194		LEVELING & WEDGING PG76-22	20.00	TON		\$	
0031	00214		CL3 ASPH BASE 1.00D PG64-22 (ADDED 6-13-24)	1,203.00	TON		\$	
0041	00388		CL3 ASPH SURF 0.38B PG64-22 (ADDED 6-13-24)	1,218.00	TON		\$	
0050	00356		ASPHALT MATERIAL FOR TACK	7.70	TON		\$	
0060	02677		ASPHALT PAVE MILLING & TEXTURING	985.00	TON		\$	

Section: 0002 - ROADWAY

LINE	BID CODE	ALT	DESCRIPTION	QUANTITY	UNIT	UNIT PRIC	FP	AMOUNT
0070	00003		CRUSHED STONE BASE	392.00	TON		\$	
0080	00100		ASPHALT SEAL AGGREGATE	3.96	TON		\$	
0090	00103		ASPHALT SEAL COAT	.47	TON		\$	
0100	02237		DITCHING	200.00	LF		\$	
0110	02562		TEMPORARY SIGNS	250.00	SQFT		\$	
0120	02650		MAINTAIN & CONTROL TRAFFIC (BRACKEN KY 9 HSIP)	1.00	LS		\$	
0130	02650		MAINTAIN & CONTROL TRAFFIC (PENDLETON KY 9 HSIP)	1.00	LS		\$	
0140	02671		PORTABLE CHANGEABLE MESSAGE SIGN	2.00	EACH		\$	
0150	02696		SHOULDER RUMBLE STRIPS	5,276.00	LF		\$	
0160	02704		SILT TRAP TYPE B	1.00	EACH		\$	
0170	02726		STAKING (BRACKEN KY 9 HSIP)	1.00	LS		\$	
0180	02726		STAKING (PENDLETON KY 9 HSIP)	1.00	LS		\$	
0190	02775		ARROW PANEL	1.00	EACH		\$	
0200	05950		EROSION CONTROL BLANKET	227.00	SQYD		\$	
0210	05952		TEMP MULCH	387.00	SQYD		\$	
0220	05963		INITIAL FERTILIZER	.10	TON		\$	
0230	05964		MAINTENANCE FERTILIZER	.10	TON		\$	
0240	05985		SEEDING AND PROTECTION	160.00	SQYD		\$	
0250	05992		AGRICULTURAL LIMESTONE	.10	TON		\$	
0255	06427		TRENCHING (ADDED 6-13-24)	4,560.00	LF		\$	
0260	06542		PAVE STRIPING-THERMO-6 IN W	6,809.00	LF		\$	
0270	06543		PAVE STRIPING-THERMO-6 IN Y	9,064.00	LF		\$	
0280	06547		PAVE STRIPING-THERMO-12 IN Y	43.00	LF		\$	
0290	06568		PAVE MARKING-THERMO STOP BAR-24IN	52.00	LF		\$	
0300	06569		PAVE MARKING-THERMO CROSS-HATCH	1,238.00	SQFT		\$	
0310	06574		PAVE MARKING-THERMO CURV ARROW	12.00	EACH		\$	
0320	06610		INLAID PAVEMENT MARKER-MW	52.00	EACH		\$	
0330	06612		INLAID PAVEMENT MARKER-BY	69.00	EACH		\$	
0340	20458ES403		CENTERLINE RUMBLE STRIPS	3,931.00	LF		\$	
0350	20748ED		SHOULDER MILLING/TRENCHING	252.00	SQYD		\$	
0355	21289ED		LONGITUDINAL EDGE KEY (ADDED 6-13-24)	5,066.00	LF		\$	

PROPOSAL BID ITEMS

244201

Page 2 of 2

Report Date 6/13/24

LINE	BID CODE	ALT	DESCRIPTION	QUANTITY	UNIT	UNIT PRIC	FP	AMOUNT
0360	23607EC		PAVE MARK THERMO-LANE REDUCTION ARROW	3.00	EACH		\$	

Section: 0003 - SIGNING

LINE	BID CODE	ALT	DESCRIPTION	QUANTITY	UNIT	UNIT PRIC	FP	AMOUNT
0370	06407		SBM ALUM SHEET SIGNS .125 IN	64.00	SQFT		\$	
0380	06410		STEEL POST TYPE 1	96.00	LF		\$	
0390	21373ND		REMOVE SIGN	3.00	EACH		\$	
0400	24631EC		BARCODE SIGN INVENTORY	4.00	EACH		\$	

Section: 0004 - DEMOBILIZATION

LINE	BID CODE	ALT	DESCRIPTION	QUANTITY	UNIT	UNIT PRIC	FP	AMOUNT
0410	02569		DEMOBILIZATION	1.00	LS		\$	